



slopeside HIDEAWAY

COZY CABINS SNUGLY TUCKED INTO THE NORTHERN MICHIGAN woods aren't just a pipe dream anymore. Boyne Mountain Resorts, partnering with Town & Country Cedar Homes of Petoskey, Mich., has successfully made mountain living a priority.

The notion of having a clutch of authentic log cabins began nearly 57 years ago when Everett Kircher, along with his wife Lois, built a model home on Boyne Mountain located on Michigan's Lower Peninsula. Kircher, who would eventually found Boyne Mountain USA Resorts, contracted with Town & Country Cedar Homes to build a series of luxury mountainside cabins.



The image shows the interior of a rustic log cabin. The walls and ceiling are made of light-colored wood. A large, vaulted ceiling features a large triangular window. In the foreground, a wooden coffee table holds a glass of red wine, a plate of cheese, and some fruit. Behind it is a large sofa with a red and black plaid pattern and two black leather pillows. In the background, a dining table with wooden chairs is visible. A large lamp with a beige shade stands on the right, and another lamp is on the left. The overall atmosphere is warm and inviting.

Finely appointed
cabins cast a spell of
rustic elegance at
Boyne Mountain Resort.

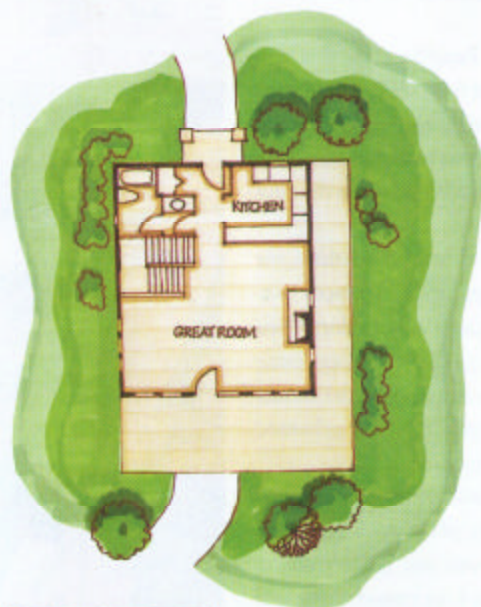
A combination living and dining room welcomes large families and promotes family togetherness. **OPPO-SITE:** Slipping outside onto the deck is a great stress reliever. "We designed the deck for just that reason—it's a back-to-nature spot that lets you slow down and reflect," says Mike Spencer of Boyne Realty.





ABOVE: Each free-standing cabin is nestled deep into the northern Michigan woods. All of the cabins are made of Canadian white cedar logs.

OPPOSITE: The convenience of having a six-person hot tub on the rear deck is a sought-after amenity. It's certainly a draw for homeowners and their guests.



STEPHEN KIRCHER, WHO TOOK OVER THE HELM from his father and now runs the Eastern Operations of Boyne USA Resorts, wanted to expand his dad's idea of having a cabin experience within a resort. Thus, Boyne Mountain cabins came to fruition in 2000.

Chuck Meyer, vice president of Town & Country Cedar Homes, is enthusiastic when he talks about the cabins, "These ski-in, ski-out cabins really give homeowners and vacationers the ideal mountain experience. The staff of Town & Country, cooperating with Boyne Mountain, professionally developed all of the cabins. The cabin floorplan offers a generous three-story unit with an ample 1,900 square feet of living space. The three bedrooms and three baths are completely furnished in a handsome lodge style."

Mike Spencer, senior sales agent with Boyne Realty, echoes Meyer's sentiments. "We started selling these cabins to a diverse population, including both young families and empty nesters, and they really took off. We think they appeal in the full sense to recreational skiers in winter and the folks who want to golf in the summer. Currently there are 20 cabins, but plans are in the works for 110 total units."

Spencer acknowledges that careful thought went into the design of the cabins. "There is a tendency in some cabins to



LEFT: "The bedrooms highlight a rustic, elegant style with deep crimson walls and built-in conveniences," says Boyne Design Group's interior designer, Sarah Rocheleau.



build lofts, which can be noisy and offer little privacy. In these cabins we designed separate bedrooms that are set apart from the living areas. This allows privacy for both adults and children. The master bedroom, for example, is on the third floor and has its own set of French doors permitting a very private enclosure. Two bedrooms, two baths, and storage are on the lower or daylight level, and the main floor has the dining, living, kitchen, and laundry rooms, plus another bath."

TUCKED INTO THE STANDS OF BIRCH AND PINE, the Adirondack-style cabins are secluded yet just a swoosh away from mountain activities. "We find this is the premiere ski and golf destination for Midwesterners. With numerous seasonal activities from a 36-hole golf course to 10 ski lifts and a series of ski and snowboard runs, the resort is full-service year round," says Julie Ard, the public relations manager at Boyne Mountain Resorts.

Meyer, general contractor at Town & Country, says these cabins are exceptionally well built. "Some hide-aways have their drawbacks, but Town & Country Cedar Homes has built these cabins with maximum efficiency. While the overall appearance is solid log inside and out,

we use SIPs (Structural Insulated Panel Systems) that separate the log halves inside and out with six inches of paneled foam insulation. The sandwich insulation material is very cost efficient for keeping heat in and costs down. There's an R rating of 28 in the walls and 48 in the roof system."

Kathryn Kircher, a principal, and Sarah Rocheleau, the interior designer with Boyne Design Group, embraced user-friendly design features to ensure quality and comfort. Their idea was to enhance the rustic elegance of cabin ambience with modern conveniences. For example, from the minute you step onto the sheltered front porch, you're welcomed into an expansive three-story log interior.

The designers appointed the cabins with woodsy, lodge-style influences featuring durable plaid wool sofas and leather chairs, painted accent pieces, and hickory dining furniture. All of the cabin kitchens have custom distressed pine cabinets with laminate slate-like countertops. Rocheleau says, "We wanted to have a very intimate, relaxed feel to the cabins—a place where you'd look forward to coming home after the day's activities."

But, it's the great room, which combines living and dining rooms, with its log timbers and generous room for gathering that is a major highlight of the cabins. Space is

one of the things that Mike Spencer maximized when he designed the cabin layout. "When we opened up the living and dining room into one large open area, we made it ideal for families who love to spend time together."

"One of the nicest features in the great room is the cultured stone fireplace," adds Meyer. "When we originally discussed the idea of having a wood-burning fireplace there was some thought of fire hazard. But, in keeping with Everett Kircher's concept of having a real wood

instead of a gas fireplace, we opted to continue his initial plan. All in all, this retains the atmosphere of an authentic cabin in the woods."

Adding a hot tub on the back deck is another amenity that guests and homeowners enjoy. "Once you've settled in after a hard day on either the links or slopes, having a hot tub is certainly a plus," says Sterling Heights, Mich., resident Renee Toft. Renee and husband Thomas own a quarter-share of their cabin. "We are up here all

BELOW: Hickory chairs and table bring the family together in the dining room. Mike Spencer designed a combination living and dining room to enlarge the cabin space and enhance room use.





ABOVE: A cultured stone, wood-burning fireplace enhances the authentic feel of the cabins. A grapevine moose accents the fireplace façade.

the time," says Renee. "It's just like a hotel only better. Everything is here and all we have to do is bring our skis, golf clubs, and food."

While the hot tub is bubbling on the deck keeping occupants toasty, the interior of the cabin stays warm from a forced-air heating system. Conversely, when the weather warms up in the summer, all units have central air conditioning.

Amy and Daniel Horning of Grand Haven, Mich., are enjoying their second season of cabin ownership. "We

are skiers, so when my husband found these cabins we were immediately impressed. Our cabin is very well built and with two teenagers and family and friends in and out, there's ample space for entertaining or just relaxing," says Amy.

The Hornings are regulars during snow season. "We have found that we use the cabin at least five times during the winter. If we're not using it, we will rent it out during the summer or let friends take advantage of the excellent location."

Similarly, Rochester Hills residents Dennis and Julie



Brown, along with their children, manage to ski three weekends a month in the winter. "We're about three and a half hours from Boyne. We love to go up and take advantage of both summer and winter sports. Once we saw how close we were to both the pro shop and the lifts, we fell in love with the cabin pretty quickly," says Dennis.

There's timeless appeal in a cabin that embraces alpine living at it's best, one that Everett Kircher's vision foretold. They have successfully captured this nostalgia. The good kind of cabin fever is alive and well at Boyne Mountain. 🍷

NOTE: Owners of cabins at Boyne Mountain may and often do rent their cabins; nightly and weekly arrangements are available. There are also building sites still available for purchase. For inquiries, call Boyne Realty at 1-888-876-2020.

LOG HOME PRODUCER: Town & Country Cedar Homes, Petoskey, Michigan; **REALTY COMPANY:** Boyne Mountain Realty, Boyne Falls, Michigan; **DESIGNER:** Boyne Mountain Design Group, Petoskey, Michigan.

ABOVE: A daylight basement on the cabin's lower level is the perfect retreat for children or guests wanting their own private space. Each cabin encompasses approximately 1,900 square feet of living space.