


*The magical atmosphere of Telluride entices
a well-traveled couple to build a log home
on a tiny slice of mountaintop land.*



A SPOT OF HEAVEN—

A large, multi-gabled wooden house with a stone base and a snow-capped mountain range in the background. The house features a prominent gable with a large window and a smaller gable above it. The roof is covered in dark shingles. The background shows a vast, snow-covered mountain range under a clear sky.

Views of the San Juan Mountain range act as a backdrop for the enchanting retreat. "The people and atmosphere in western Colorado make the place truly magical," the Whitstones exclaim.

BY KRISTA PETERS
PHOTOS BY ROGER WADE
STYLING BY DEBRA GRAHL

OR, PERHAPS, SWITZERLAND

RIGHT: High altitude windows protect the home from harsh winds and intense sunshine while providing immaculate views of the surrounding landscape.

BELOW: "The grand room is our favorite place in the home," Bruce Whitestone declares. "It is where we congregate with family and friends to enjoy this fantastic setting."

“THERE IS NO PLACE IN THE world like it, though I've heard it compared to Switzerland." That is how Dean Anderson describes the Victorian village of Telluride and its sister town, Mountain Village, in the picturesque San Juan Mountains of Colorado. A builder/dealer for Town & Country Cedar Homes and owner of Anderson Mountain Homes, Dean has been constructing the gracious and stately lodges that dot the landscape here for over 45 years.

Bruce and Gloria Whitestone, who have traveled around the globe, were immediately enamored with the 13,000-foot peaks, vivid blue skies, and sweeping ski slopes on their first visit. Having experienced the countless amenities of the area, which include 1,700 acres of lift-served skiing, a golf course, spa, and free 13-minute gondola ride connecting them to the historic Victorian village of Telluride with its clapboard houses and charming boutiques, they were determined to capture a permanent piece of the magnificent place for themselves. They worked with a local real estate broker to find the





LEFT: The open floor-plan was designed by Dan Houlihan of Fountainhead Studio in Telluride and was one of the design features the Whitestones requested at the beginning of the project.

BELOW: Interior furnishings and décor were chosen for their rustic, mountain-like stylings. The motif, largely contrived by Gloria Whitestone, was achieved with pieces from Huntington House and Alexander Taylor.

cozy parcel of land in Knoll Estates they would soon call theirs; it was about one-tenth of a sloping acre with stunning view potential.

The thrill of acquiring the spot was subsequently replaced by an apprehensive knowledge of imminent challenges, the first being how to construct a dwelling that would meet the community's numerous parameters while fully satisfying the Whitestones' vision of their ideal home in such a limited space. This in addition to the fact that the couple was constantly traveling caused Bruce and Gloria to cautiously approach the task of finding a designer and builder. Dean Anderson was just the person to call.

"Given that we were 2,000 miles away, we had to rely on the builder quite a lot. We were very comfortable with how Anderson Mountain Homes worked and there seemed to be a lot of good teamwork associated with their past projects. These factors made the decision for us," Bruce explains.

Before meeting the Whitestones, Dean had worked successfully with Dan Houlihan of Fountainhead Studio in Telluride to plan the layout and construction of numerous homes in Mountain Village. "We communicated with Bruce Whitestone primarily through e-mail to make decisions because he was always traveling. But it worked



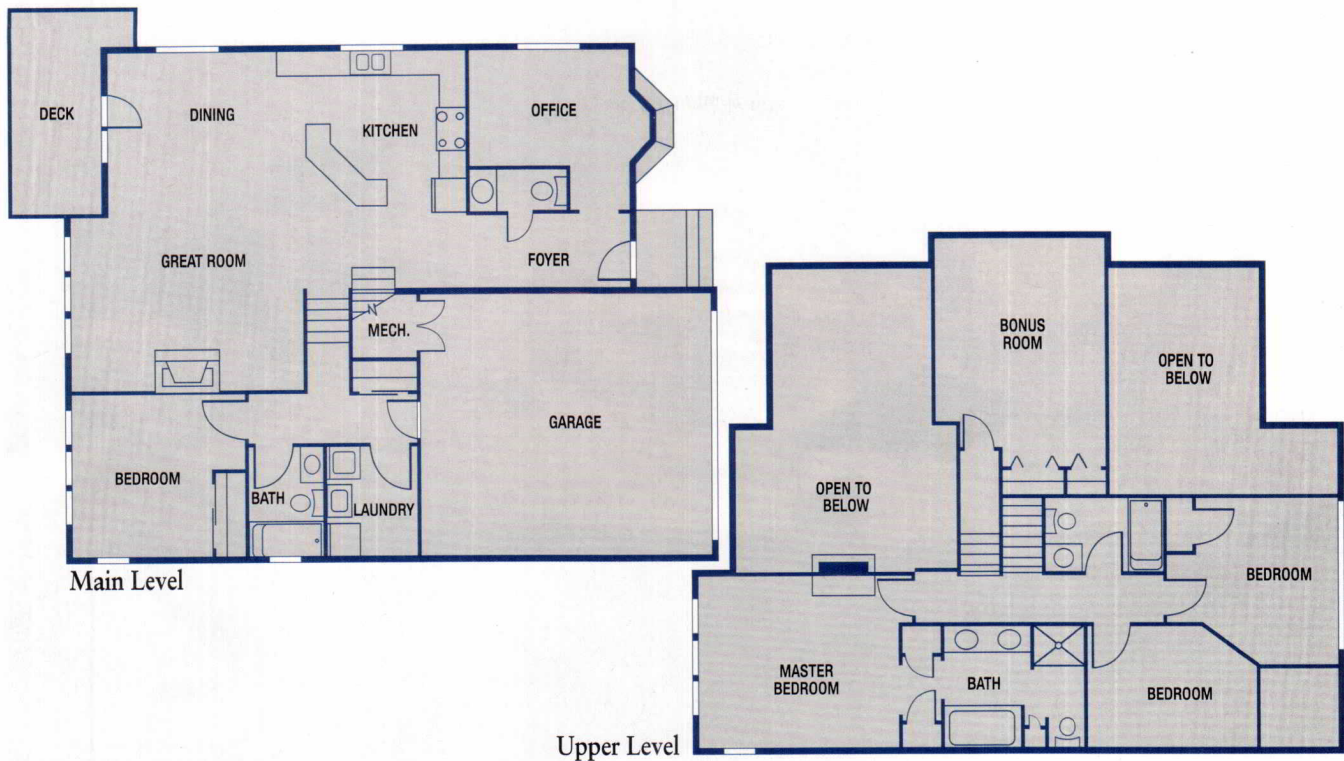
RIGHT: The private master suite is situated on the upper level of the home, providing the Whitestones a relaxing retreat from the activity of the main living area and guest room below.

BELOW: Dean Anderson notes that an impressive aspect of the Whitestone lodge is that it boasts every amenity of a larger home despite its compact size.



because we are used to it. Ninety-eight percent of our clients are from out of state,” Dean clarifies. Together, Dean and Dan approached the Whitestone project without hesitation despite the demanding circumstances.

Because of past experiences, Dan was already aware of the parameters set by the Telluride and Mountain Village communities and he set about designing the home with those restrictions in mind. “There were so many things to consider,” he explains. “Knoll Estates has a design review process as it is a resort overlooking a golf course and ski area. There are height restrictions and guidelines for materials that must be used, as well as general architectural requirements.” Working within these limits while trying to create the ideal retreat for the Whitestones proved to be quite a hurdle. The Whitestones wanted four bedrooms, an open floorplan, and the maximum amount of square footage they could possibly achieve on their slim and sloping property. Above all in priorities was, of course, maximizing the panoramic views.



Dan worked skillfully, designing a structure with over 2,500 square feet of living space with all the inherent elegance and captivating vistas of the surrounding homesteads. “The view corridors were very important. They had views from the north and south of the home. To the east and west were neighbors, so we wanted to make sure there would be privacy in those directions. Therefore, the window and room locations were considered accordingly,” Dan recalls. “The layout of the home also afforded enough room for five bedrooms instead of four and that extra room is spacious enough that it can be used as a media room as well.”

Once the finishing touches on the plan had been drawn, the second half of the process, building the home, was handed over to Dean Anderson, and, although the hurdles were different in nature, they were certainly no different in number. “Really, the home sits on almost the entire property so we had very little extra space in which to work when maneuvering during construction. We ended up using cranes to transport most of the wood and materials and then moved them manually during construction because we had very little extra equipment,” Dean remembers. In an area that can accumulate up to 10 feet of snow on sloping lots, constructing the home was no simple feat. But Dean, Dan, and the Whitstones effortlessly worked together to ensure success.

The home materials came from Town & Country Cedar Homes. Cedar is durable and holds up well against the harsh elements that characterize the Telluride terrain. Dan explains, “What’s true about this region is that even though there is so much snow, it is still warm even in the winter. The engineering of the house must deal with

extreme snow loads and roof pitches are designed to allow drainage for melting and freezing precipitation.” Dan also adds that the San Juan Mountain area actually resembles a wetlands region. “It is really very lush, more than I think people realize.” In addition to utilizing durable wood and stains, homes in the area are assembled with a higher percentage of stone in the foundation and on the exterior than elsewhere and high-altitude windows hold up against high winds and intense sunshine.

Once the construction of the home was complete, the Whitstones enthusiastically tackled the finishing touches by adding comfortable interior design details. “We were looking for a middle-of-the-road rustic style—rustic but not too primitive,” Bruce says. “Several pieces of furniture came from Fairfield Chair, Huntington House, and Alexander Taylor because their collections included “mountainy” fabrics and leathers.”

In the end, the Whitstones were the proud owners of a vacation sanctuary that exceeded their expectations. “Our favorite place is the great room, which opens into the kitchen. The combination of the large stone fireplace and the views gives us a relaxing atmosphere embraced by a magnificent backdrop.” Their family and friends share their affection for the lodge. “We really enjoy having extended family come to the home on holidays and during the summer. We had a large Christmas tree in the great room next to the fireplace with a stunning view out the back windows. It was pretty fantastic to be with the family in this setting.”

Just as significant is the Whitstones’ appreciation of Dean Anderson and Dan Houlihan. On the Anderson Mountain Homes Web site, Bruce lauds, “Anderson





Mountain Homes met every one of the challenges and produced a home that I think has favorably surprised a lot of people. When we first started, many of those we spoke with said that it would be very difficult to even build a home on this site. You proved them wrong and created something very special.”

Indeed, the key to Dean and Dan’s success is their shared philosophy of building relationships with future homeowners. “You can build as a team or as an adversary. There really is no in between. When we make decisions we make them to improve and build upon relationships. It’s a team effort and it was the most important factor when working with the Whitestones,” Dean acknowledges.

When commenting on his favorite aspect of the Whitestone home, Dan remarks, “Architects can go in and put in anything they want and, while you might love it and I might love it, the clients might not. Listening to Bruce and Gloria—giving them an open floorplan, a separation between the guest rooms and the master suite, and meeting the demands of the physical landscape—was the num-

ber one priority. The fact that we met the Whitestones’ requirements is what I am most proud of.”

In Telluride and Mountain Village, visitors and residents have a cornucopia of activities and attractions to tempt them. From horseback riding to hiking, dog-sledding to rafting, fishing to shopping, or enjoying an enchanting gondola ride, the leisurely options seem endless. Dan Houlihan says, “What happens out here in Telluride is that when you visit you want to come out as often as possible. But once you have a home here you cannot stop coming out. You simply cannot stop thinking about it.” The Whitestones can now reasonably claim they have a spot like no other in the world—except perhaps Switzerland. But the breathtaking views and wonderful people of western Colorado would more likely make the well-traveled couple claim that the magical atmosphere of Telluride is like no other in the world. ❧

LOG HOME PRODUCER: Town & Country Cedar Homes, Petoskey, Michigan; **BUILDER:** Anderson Mountain Homes, Telluride, Colorado; **ARCHITECT:** Fountainhead Studio, Telluride, Colorado.

ABOVE: The split-level Whitestone residence covers the sloping property almost entirely.

OPPOSITE: Cedar beams and carefully engineered roof pitches are durable against the rugged elements and are essential when designing homes that will withstand the seasons in Telluride and Mountain Village.