



TOWN+COUNTRY
CEDAR HOMES

LIFESTYLES CRAFTED IN CEDAR

Green Bay Lodge



FRONT ELEVATION

Total Square Footage: 5,923

Number of Levels: 2

Number of Bedrooms: 5

Number of Bathrooms: 4.5

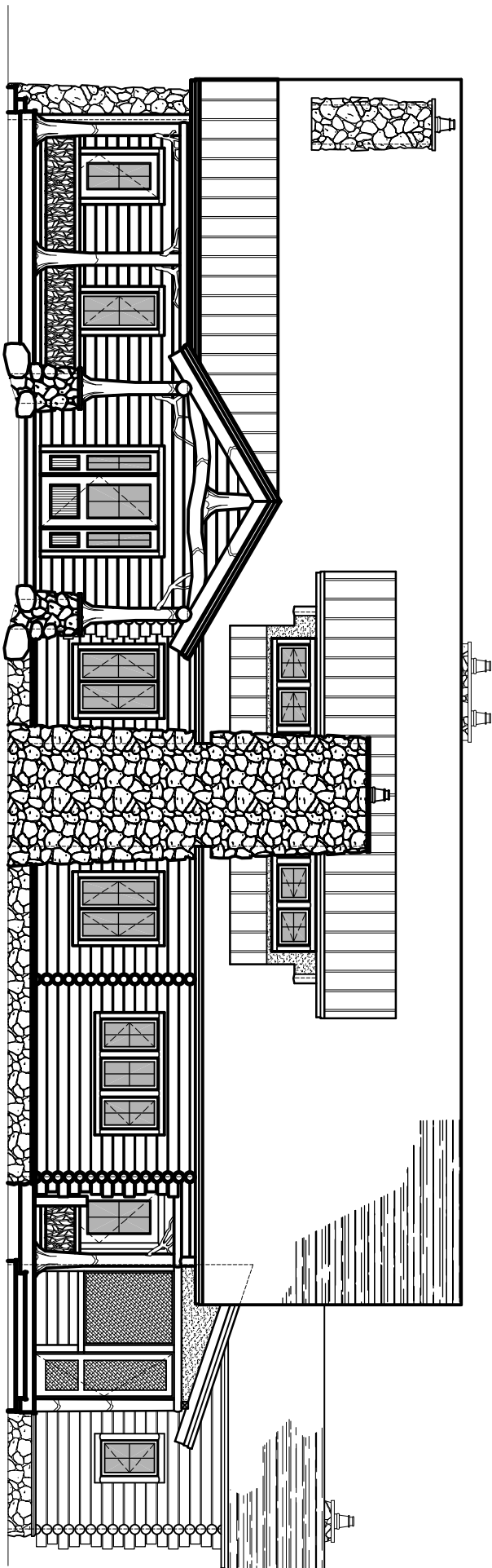
Basement: Yes

Garage: 0



REAR
ELEVATION

Grab a cup of coffee, tea or a glass of wine. Over the phone or in person, on your site or at our office. No talk of a project or a house—we'll talk about your home... **It's that simple.**



FRONT ELEVATION

SCALE: 3/32" = 1'-0"



TOWN+COUNTRY
CEDAR HOMES

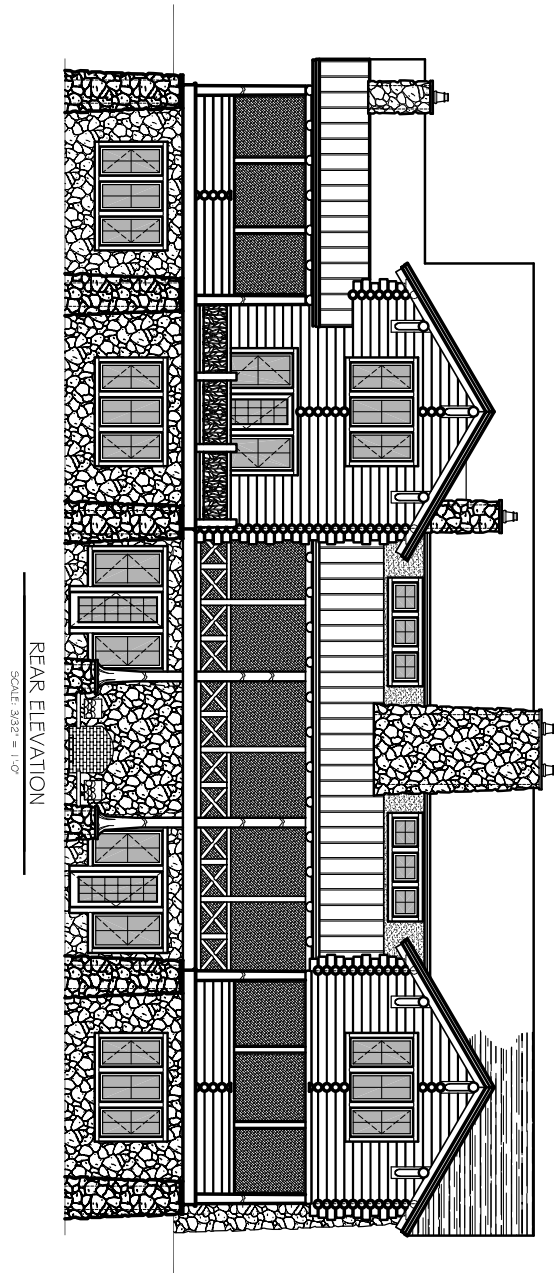
HOME PLAN #050014

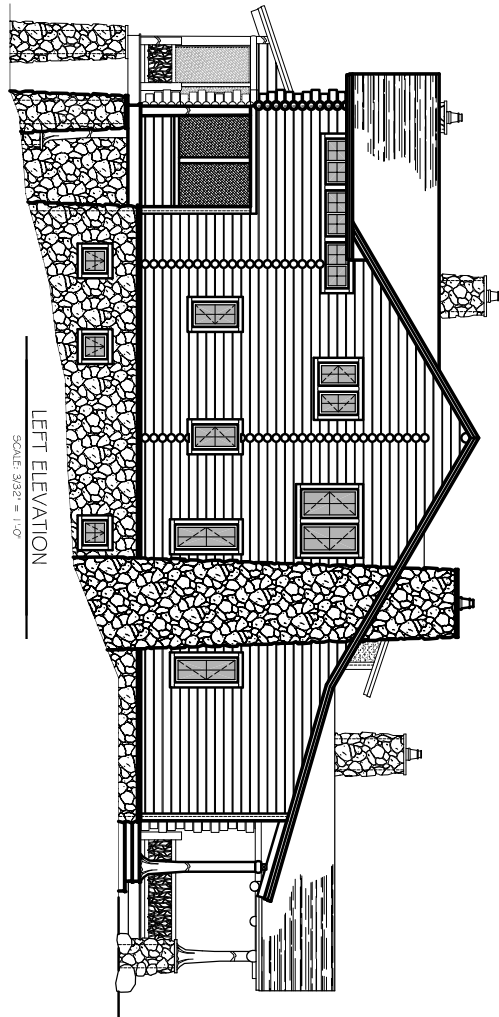
LIFESTYLES CRAFTED IN CEDAR

WWW.CEDARHOMES.COM

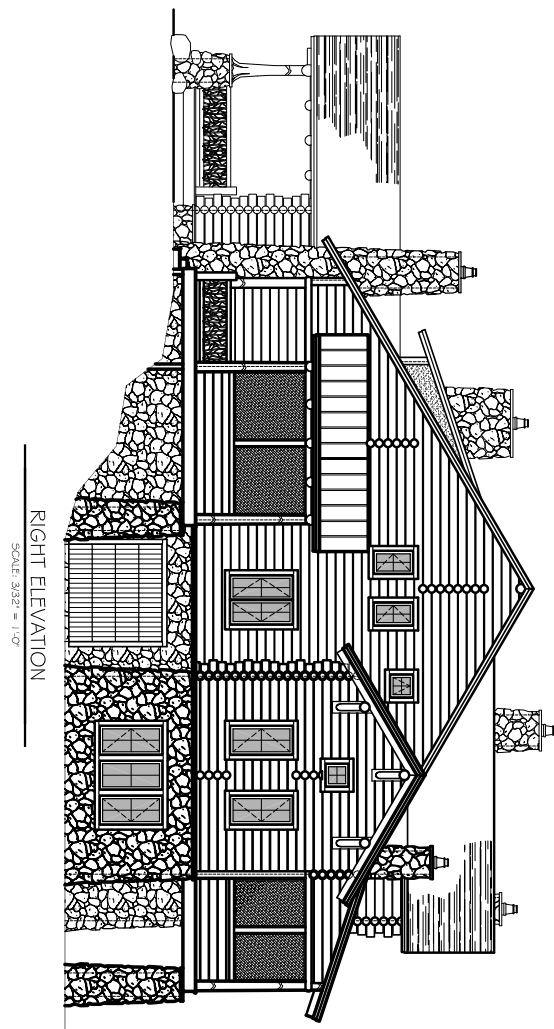
THIS DRAWING IS CONSIDERED A PROPRIETARY
PRODUCT OF TOWN & COUNTRY CEDAR HOMES. IT
IS NOT TO BE USED OR REPRODUCED IN ANY MANNER
UNLESS AUTHORIZED IN WRITING BY TOWN &
COUNTRY CEDAR HOMES.

1-800-968-3178





LEFT ELEVATION
SCALE 3/32" = 1'-0"



RIGHT ELEVATION
SCALE 3/32" = 1'-0"



TOWN+COUNTRY
CEDAR HOMES

HOME PLAN #050014

LIFESTYLES CRAFTED IN CEDAR

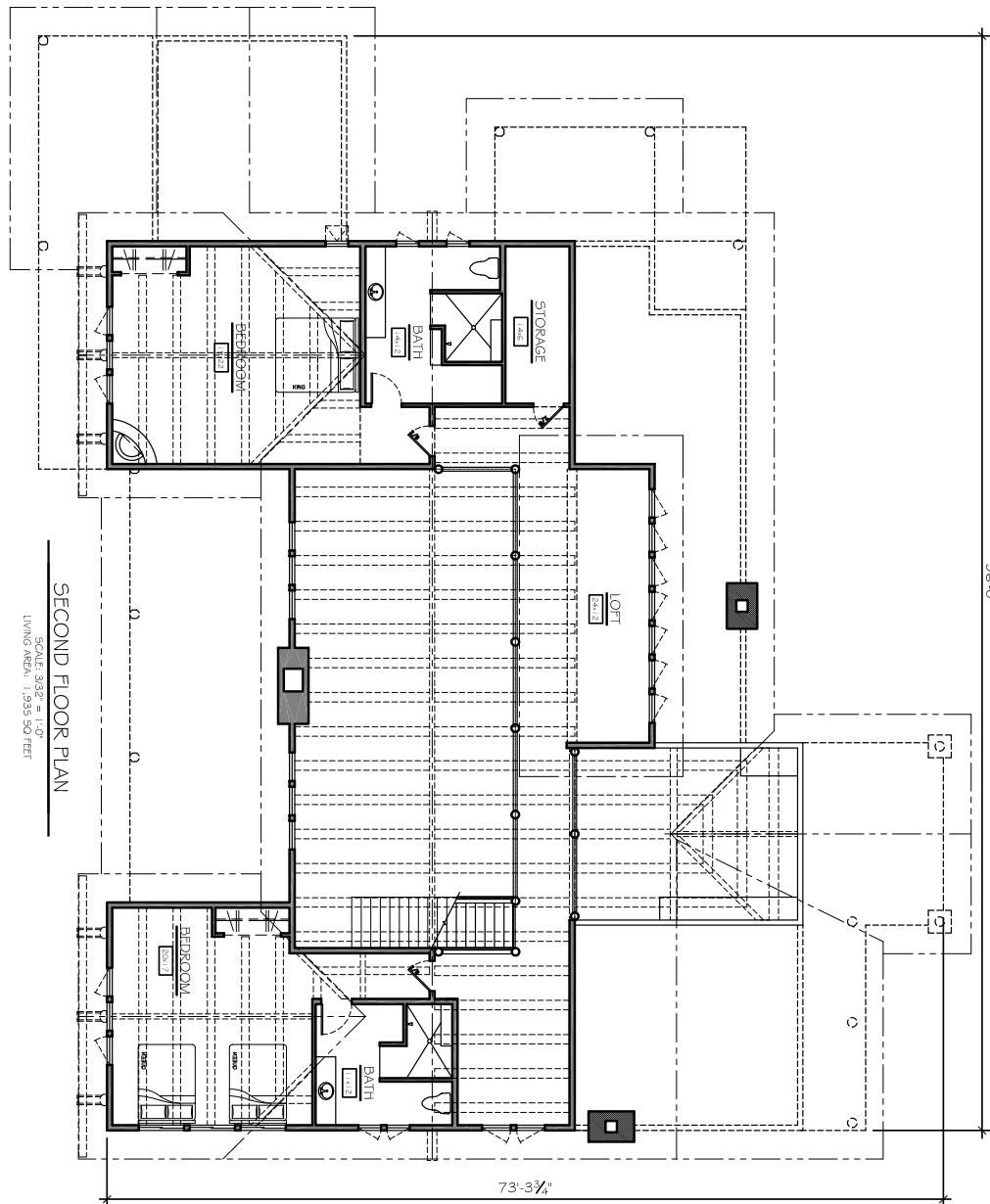
WWW.CEDARHOMES.COM

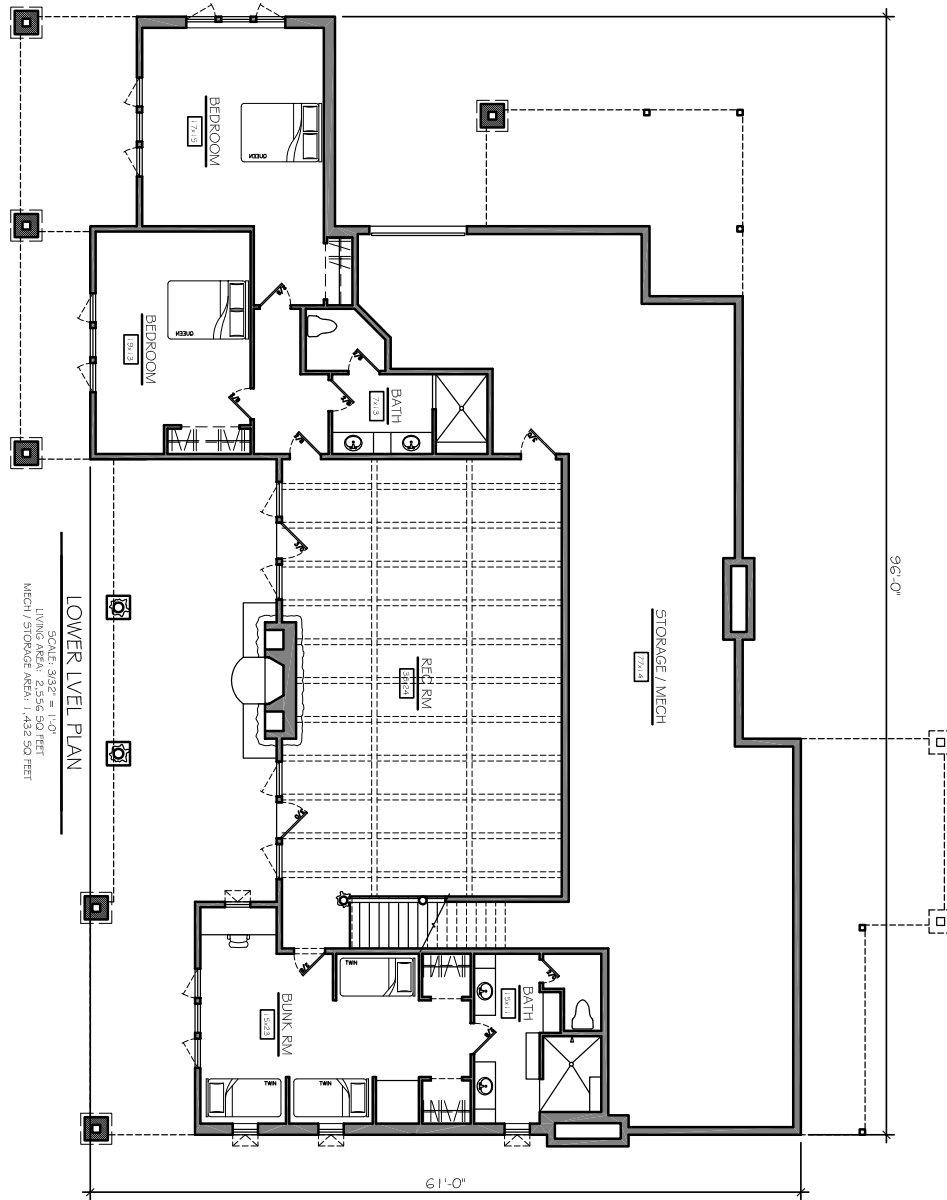
THIS DRAWING IS CONSIDERED A PROPRIETARY
PRODUCT OF TOWN & COUNTRY CEDAR HOMES. IT
IS NOT TO BE USED OR REPRODUCED IN ANY MANNER
UNLESS AUTHORIZED IN WRITING BY TOWN &
COUNTRY CEDAR HOMES.

1-800-968-3178



1-800-968-3178





TOWN+COUNTRY
CEDAR HOMES

HOME PLAN #050014

LIFESTYLES CRAFTED IN CEDAR

WWW.CEDARHOMES.COM

THIS DRAWING IS CONSIDERED A PROPRIETARY
PRODUCT OF TOWN & COUNTRY CEDAR HOMES. IT
IS NOT TO BE USED OR REPRODUCED IN ANY MANNER
UNLESS AUTHORIZED IN WRITING BY TOWN &
COUNTRY CEDAR HOMES.

1-800-968-3178