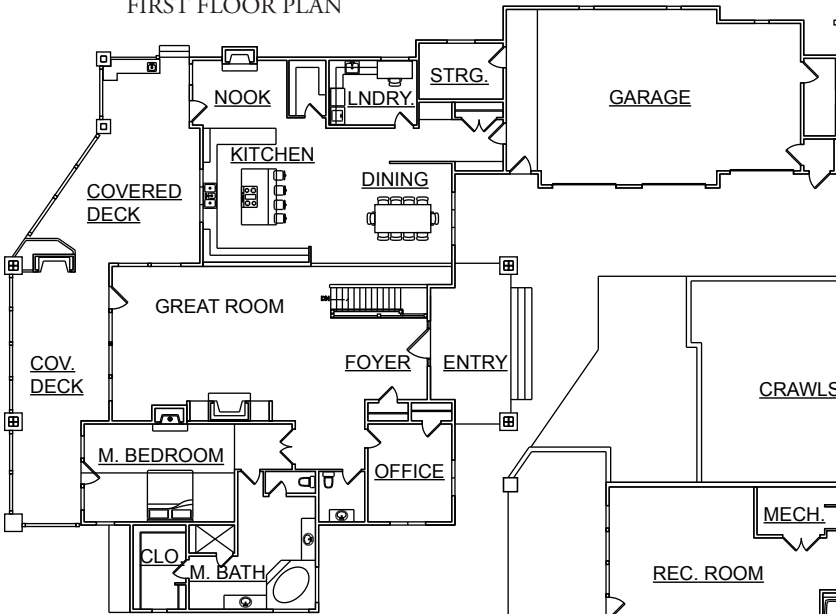


Roycroft

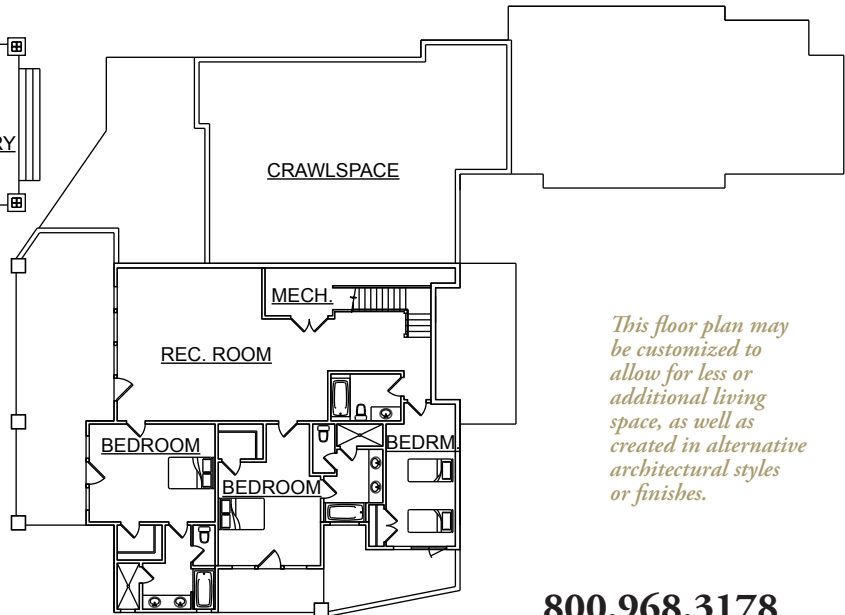
CRAFTSMAN. A stunning arts and crafts style home, artistically worthy of being named after one of the greatest known craftsman style architects. The Roycroft features rough sawn timber siding with chinking, custom stonework and timber rafters over the outdoor decks. Multiple fireplaces provide numerous entertainment focal points. Expansive window systems in adjoining areas encourage an almost limitless view of your property. Covered Decks, Nooks and Office expand the already spacious living areas. Exquisite details and design elements create functional, yet stylistic use of space in this delightful home.

FIRST FLOOR PLAN

Total Living Area: 5,520 s.f.
Total Bedrooms: 4
Bathrooms: 4 1/2



LOWER LEVEL PLAN



This floor plan may be customized to allow for less or additional living space, as well as created in alternative architectural styles or finishes.

**Town & Country Cedar Homes:
No comparison. No compromise.**

DESIGN ■ PRODUCE ■ BUILD

800.968.3178
www.cedarhomes.com

© 2009 Town & Country Cedar Homes, Inc. A copyright is claimed on these concepts and ideas which may not be copied, assigned, modified or further distributed without the written permission of Town & Country Cedar Homes, Inc.