



# Refuge

**UNCOMMON.** Filled with lofty timber trusses and luxurious Northern white Cedar craftsman finishes, the homeowner will be compelled to escape to this refuge as frequently as possible. Featuring three levels of outstanding floor plan design, the Refuge offers spacious gathering spaces and intimate comfort zones - all waiting to be filled with family and friends. With a trademark double radial bay, three season room, balcony, and a variety of trendy shed and gable dormers, this home offers style at every corner. Gather your family and come to this majestic refuge.

*Town & Country* CEDAR HOMES

800.941.2279

[www.cedarhomes.com](http://www.cedarhomes.com)

DESIGN ■ PRODUCE ■ BUILD

# Refuge



DESIGN ■ PRODUCE ■ BUILD

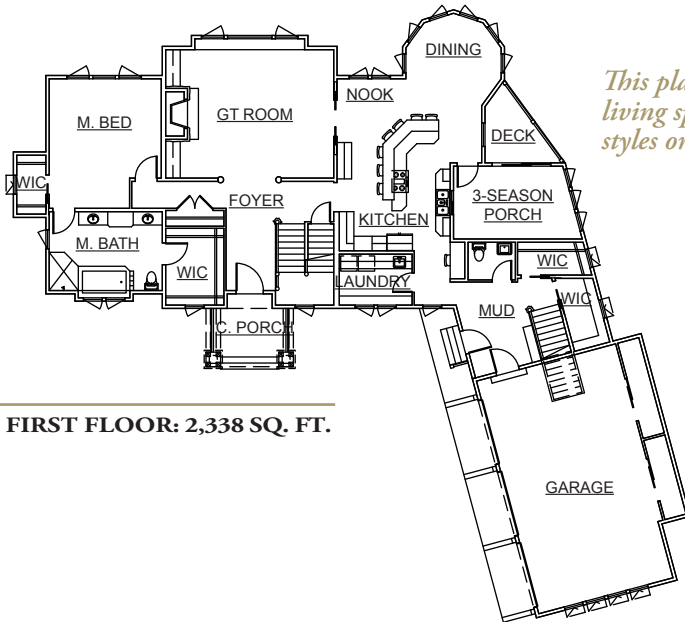
800.941.2279

[www.cedarhomes.com](http://www.cedarhomes.com)

*This plan may be customized to allow for less or additional living space, as well as created in alternative architectural styles or finishes.*

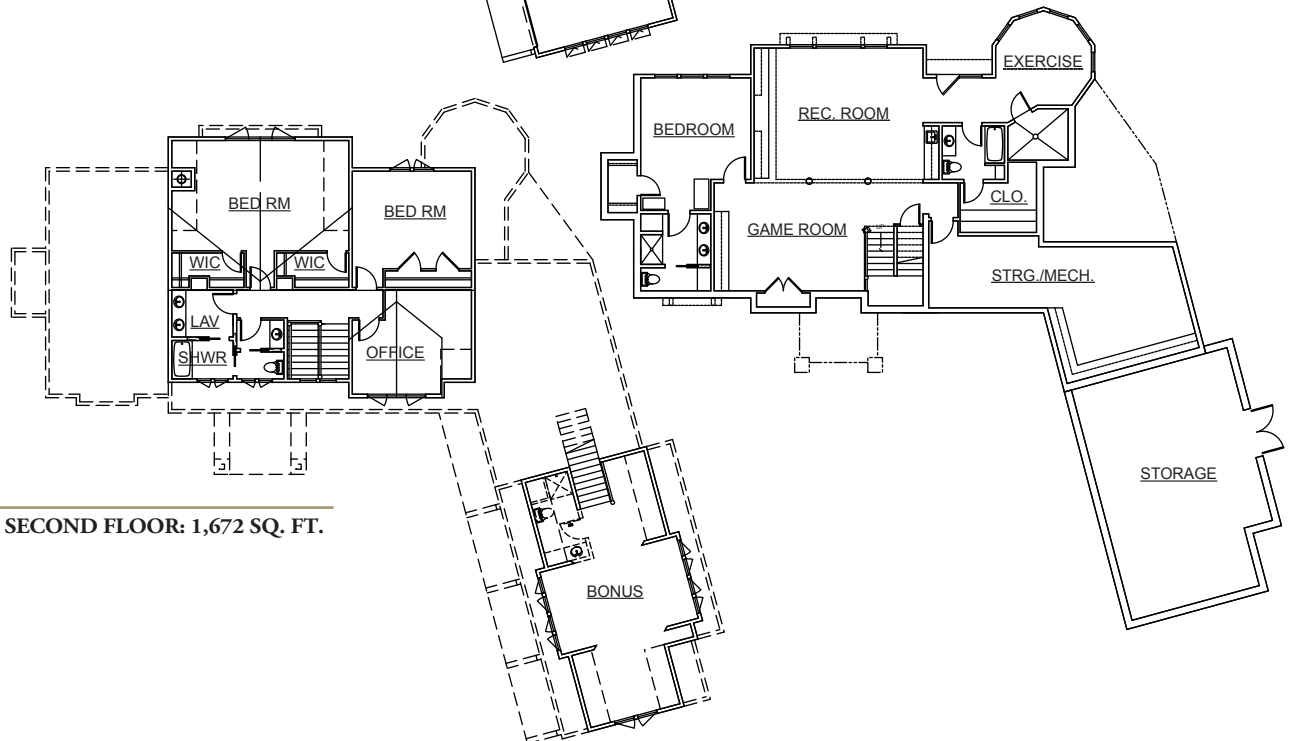
**TOTAL LIVING AREA: 6,430 SQ. FT.**

**4 BEDROOMS, 5 1/2 BATHROOMS,  
BONUS ROOM OVER GARAGE,  
GAME ROOM, REC ROOM,  
EXERCISE ROOM, OFFICE,  
3-SEASON PORCH**



**FIRST FLOOR: 2,338 SQ. FT.**

**LOWER LEVEL: 2,420 SQ. FT.**



**SECOND FLOOR: 1,672 SQ. FT.**