

The Portage



DESIGN ■ PRODUCE ■ BUILD

800.968.3178

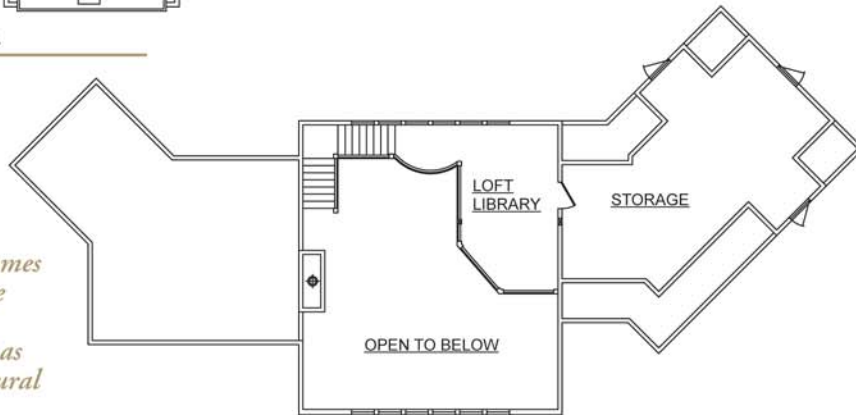
www.cedarhomes.com

TOTAL LIVING AREA: 4,321 SQ. FT.

4 BEDROOMS, 4 1/2 BATHROOMS

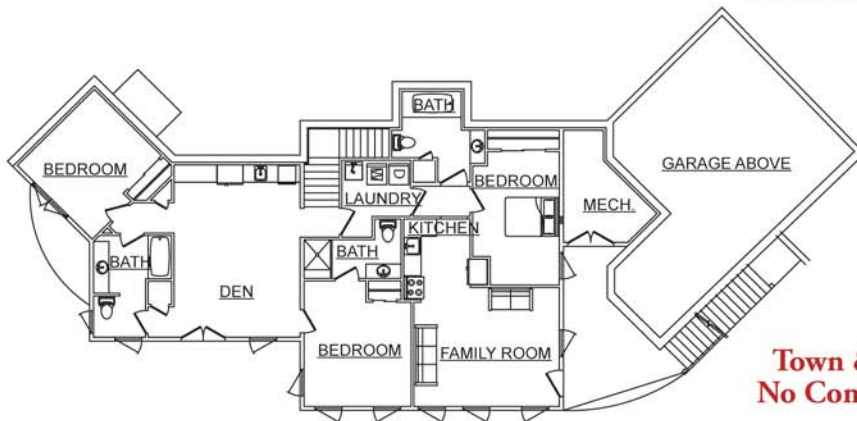


FIRST FLOOR: 1,836 SQ. FT.



SECOND FLOOR: 710 SQ. FT.

All Town & Country Cedar Homes architectural floor plans may be customized to allow for less or additional living space, as well as created in alternative architectural styles or finishes.



LOWER LEVEL: 1,775 SQ. FT.

**Town & Country Cedar Homes:
No Comparison. No Compromise.**

© 2009 Town & Country Cedar Homes, Inc. A copyright is claimed on these concepts and ideas which may not be copied, assigned, modified or further distributed without the written permission of Town & Country Cedar Homes, Inc.

Town & Country CEDAR HOMES

TIMBER
STYLE



The Portage

MAJESTIC. Custom timbers soar overhead in this open floor plan with multiple family living and entertainment areas. Beautiful Northern White Cedar frames an elegant loft with a birdseye view of your property. For those who demand quality, the craftsmanship of this home spoils you for anything else.



DESIGN ■ PRODUCE ■ BUILD

800.968.3178
www.cedarhomes.com