



# Pine Canyon

**SOARING TIMBERS.** Combine the angular design of this stunning mountain rustic home with your hillside property, and you've got a winner. Handcrafted of Northern White Cedar this home affords an extended view from every room as well as from the covered, wrap-around deck. Angular like the mountains, this design lets in the light to dance along the beautifully chinked timbers and custom trusses soaring overhead. The glow of four different fireplaces will brighten your great room, main level master suite, lower level entertainment area, and outdoor covered deck. Downstairs there is room to roam with bedrooms, playrooms, and walkout to covered patio areas.

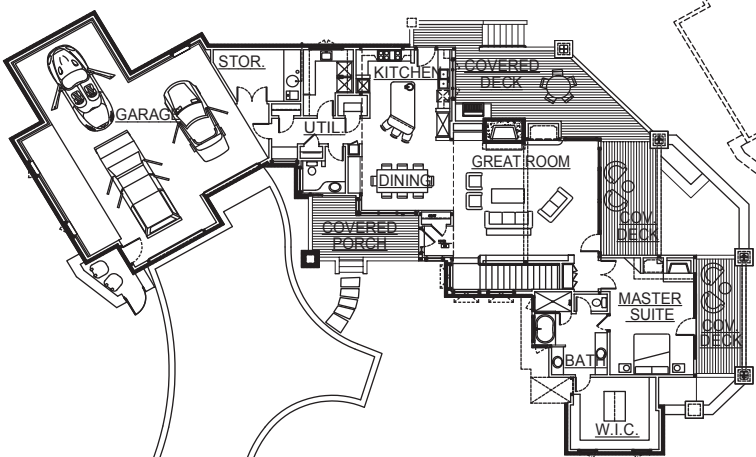
**Town & Country Cedar Homes:  
No comparison. No compromise.**

**TOTAL LIVING AREA: 3,471 SQ. FT.  
3 BEDROOMS, 3 1/2 BATHROOMS**

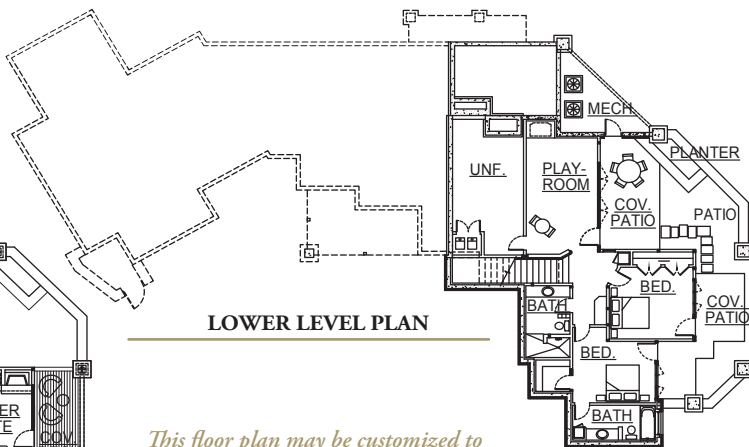
DESIGN ■ PRODUCE ■ BUILD

800.968.3178

www.cedarhomes.com



FIRST FLOOR PLAN



LOWER LEVEL PLAN

*This floor plan may be customized to allow for less or additional living space, as well as created in alternative architectural styles or finishes.*

© 2009 Town & Country Cedar Homes, Inc. A copyright is claimed on these concepts and ideas which may not be copied, assigned, modified or further distributed without the written permission of Town & Country Cedar Homes, Inc.