



# Mackinac

**FLAIR.** Imagine beautifully hand hewn columns with stacked stone bases bordering an expansive front porch. Warmed by the full length lodge logs surrounding you, and sheltered by the custom log trusses soaring overhead, you enjoy the coming dusk in front of a massive stone fireplace, while gazing out picturesque windows trimmed in Northern White Cedar. Your guests exit their private suite stepping out to the nearby, radial bay screened porch, cocktails in hand, to watch as the sun slips down. The dinner table is set in the adjoining dual radial bay off a gourmet kitchen. With a flair for true log lodge design, the Mackinac presents a grand log home with two wings of luxurious living.

*Town & Country* CEDAR HOMES

800.941.2279

[www.cedarhomes.com](http://www.cedarhomes.com)

DESIGN ■ PRODUCE ■ BUILD

# Mackinac



TOTAL LIVING AREA: 3,929 s.f.  
6 BEDROOMS, 4 FULL BATHROOMS

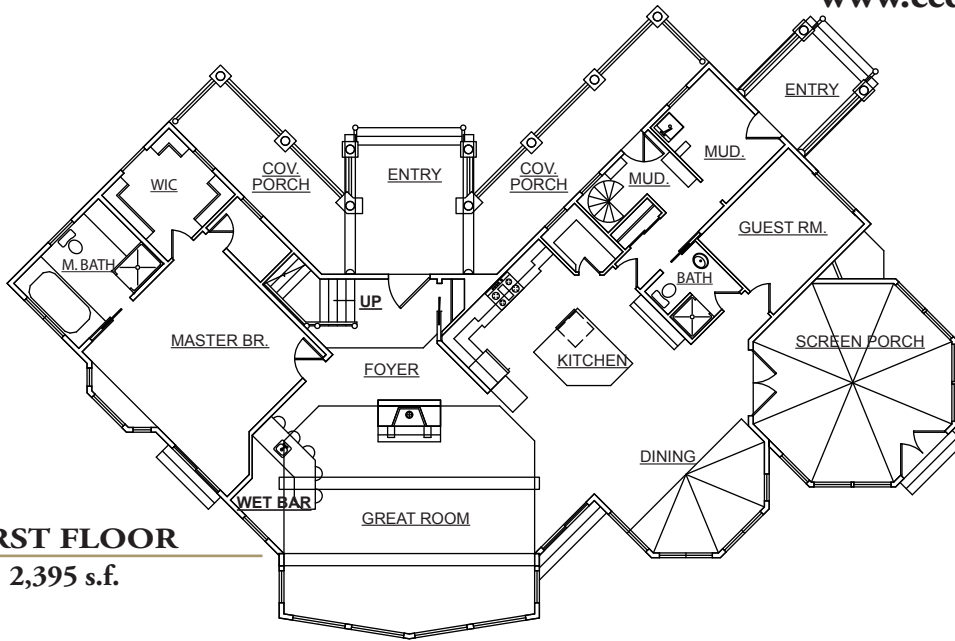
DESIGN ■ PRODUCE ■ BUILD

800.968.3178

www.cedarhomes.com

LOG  
L  
O  
D  
G  
E  
S

## FIRST FLOOR 2,395 s.f.



*All Town & Country Cedar Homes architectural floor plans may be customized to allow for less or additional living space, as well as created in alternative architectural styles or finishes.*

## SECOND FLOOR 1,534 s.f.

