



Hudson



TREND-SETTER. With luxurious aplomb, this model combines stucco, stone, and log elements for a modernistic approach to wooden home living. Traditional log trusses soar overhead in the cathedral great room, while adjoining log radial bay areas accent the exterior and interior of the home's design. Stucco compliments the exterior stone columns and foundation finishes while hand-hewn log trim is found throughout. With four bedrooms, this plan makes a welcoming statement for family and friends. Utilize the spacious Bonus Room over the garage as a guest suite, office, or exercise room.

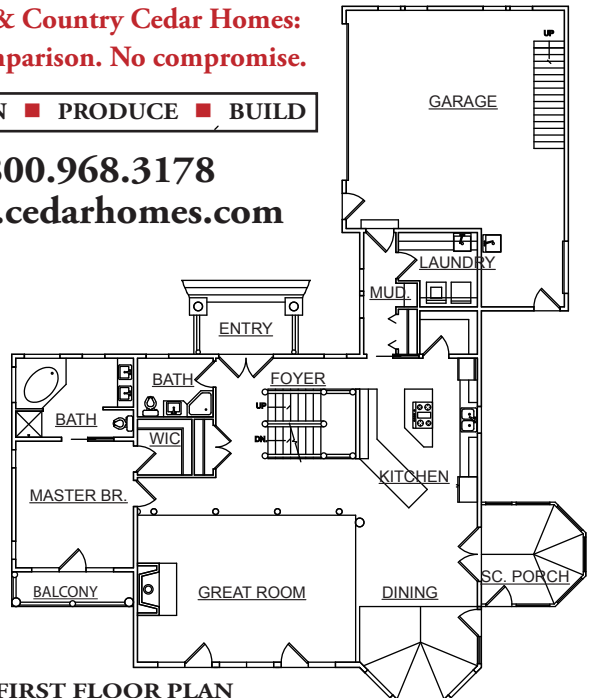
**Town & Country Cedar Homes:
No comparison. No compromise.**

DESIGN ■ PRODUCE ■ BUILD

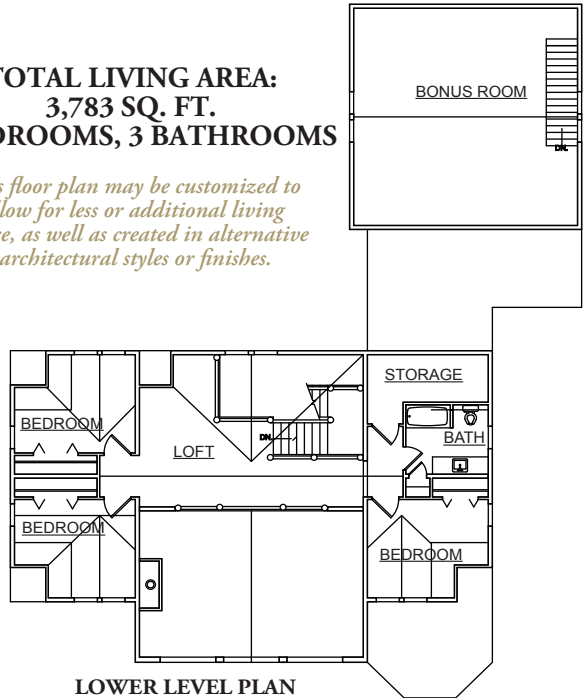
800.968.3178
www.cedarhomes.com

**TOTAL LIVING AREA:
3,783 SQ. FT.
4 BEDROOMS, 3 BATHROOMS**

This floor plan may be customized to allow for less or additional living space, as well as created in alternative architectural styles or finishes.



FIRST FLOOR PLAN



LOWER LEVEL PLAN