

Town & Country CEDAR HOMES



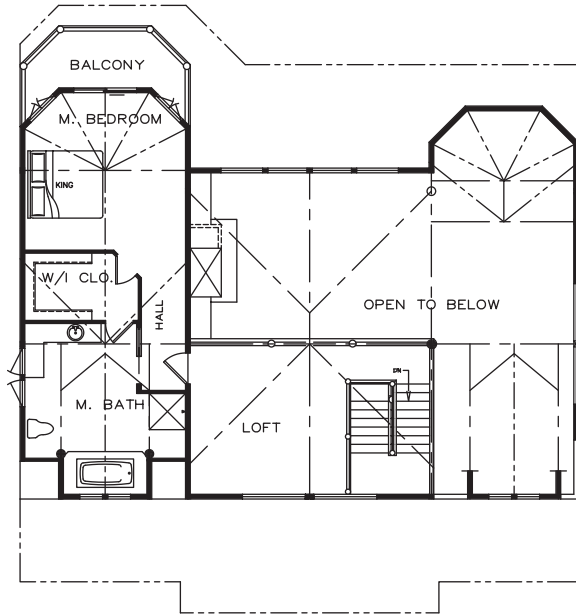
Detailed Design. Note the architectural details found in this three story custom home, including dual radial bays -- a trademark of Town & Country contemporary log home designs. Interior chinked walls mingle with tongue and groove cedar paneling and purlins, provide texture and relief on walls and ceilings. Winding cedar stair systems, open walkways and decks combine to create a unique curb appeal. With a walkout lower level creating access for water sports, this is a perfect design for lakeside living.

Harbor Point

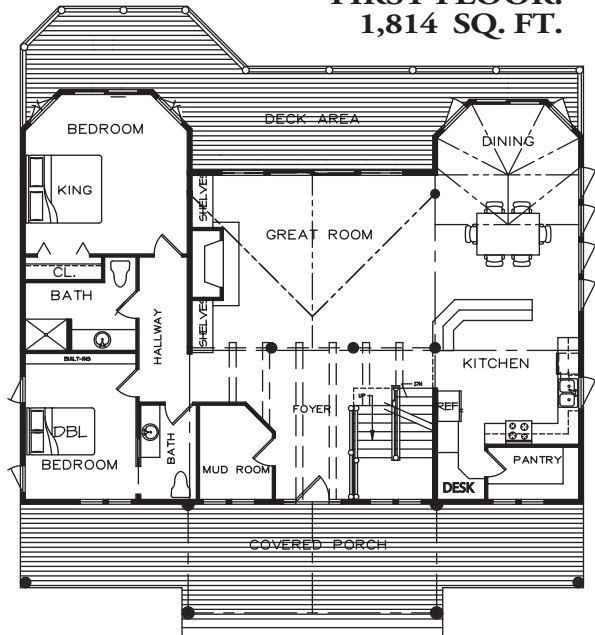
DESIGN ■ PRODUCE ■ BUILD

800.968.3178
www.cedarhomes.com

**SECOND FLOOR:
980 SQ. FT.**



**FIRST FLOOR:
1,814 SQ. FT.**



Harbor Point

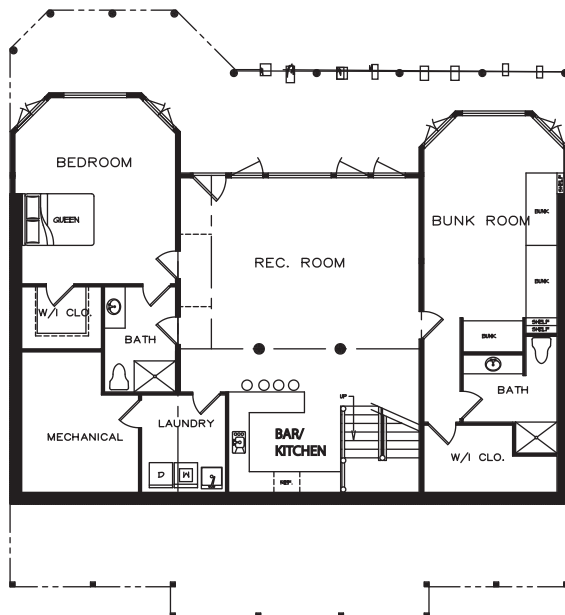
5 Bedrooms, 4 1/2 Baths

**Lower Level Recreation Room with
Entertainment Bar/Kitchen
and Bunk Room**

**Total Living Area
As Shown: 4,608 Sq. Ft.**

**Deck: 546 Sq. Ft.
Covered Porch: 507 Sq. Ft.**

**LOWER LEVEL:
1,814 SQ. FT.**



**Town & Country Cedar Homes:
No comparison. No compromise.**

This floor plan may be customized to allow for less or additional living space, as well as created in alternative architectural styles or finishes.

© 2009 Town & Country Cedar Homes, Inc. A copyright is claimed on these concepts and ideas which may not be copied, assigned, modified or further distributed without the written permission of Town & Country Cedar Homes, Inc.