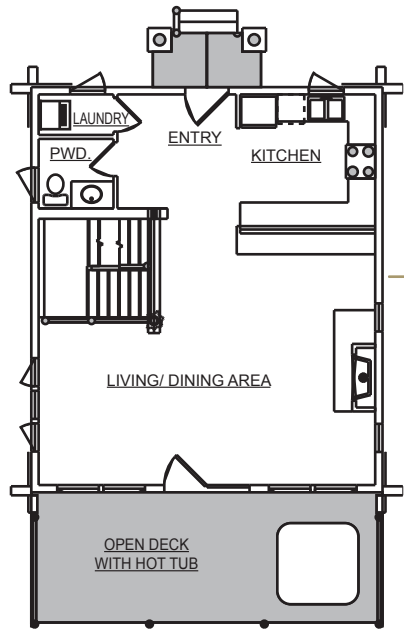
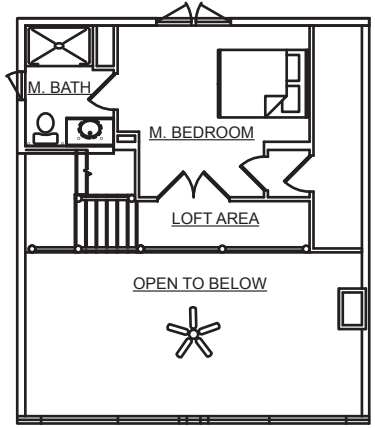


Boyne Cabin

Total: 1,868 Square Feet
3 Bedrooms plus Loft, 3 1/2 Baths

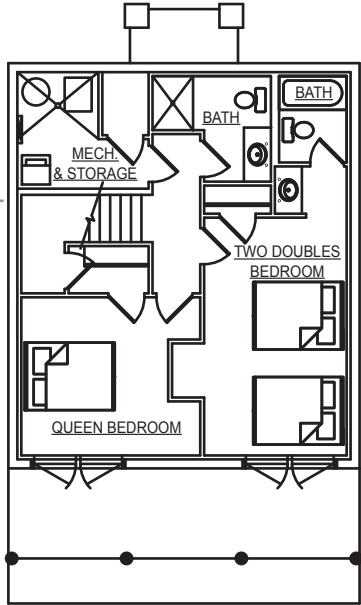


FIRST FLOOR:
780 SQ. FT.



SECOND FLOOR:
308 SQ. FT.

LOWER LEVEL:
780 SQ. FT.



Town & Country Cedar Homes:
No Comparison. No Compromise.

All Town & Country Cedar Homes floor plans may be customized to allow for less or additional living space, as well as created in alternative architectural styles or finishes.

Town & Country CEDAR HOMES

DESIGN ■ PRODUCE ■ BUILD

800.968.3178

www.cedarhomes.com



Boyne Cabin

CAPTIVATING. Finished with Swedish Cope style corners, this award-winning, compact log cabin design is featured at midwest Boyne USA resort communities. Picturesque views are framed by hand-hewn Northern White Cedar logs inside and out. Perfect for the whole family, this cabin sleeps eight and has every amenity needed for comfortable resort living. This floor plan is also available in a ranch equivalent, and can be built in timber or log style finishes. For living off the beaten track, by lakeshore or close to town, this enchanting three level home has an entire floor for the master suite, plus a large open entertainment area. The Boyne Cabin design provides the perfect getaway with plenty of room to store your sports or entertainment gear!